

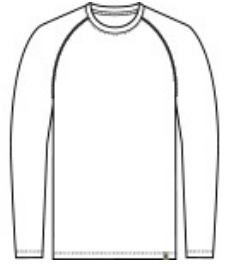


Russell Outdoors™ Realtree® Performance Long Sleeve Tee RU150LS

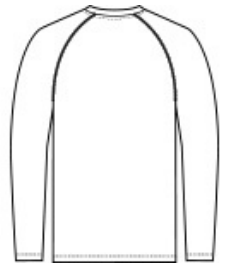
For the outdoor enthusiast who wants the Realtree EDGE® print but prefers a more technical feel, moisture-wicking and long sleeve coverage. It's a perfect base layer or stand-alone tee, ready for work, chores or exploring the great outdoors.

- 3.8-ounce, 100% polyester with moisture-wicking
- Tag-free label
- Realtree EDGE® print
- Shoulder-to-shoulder neck taping
- Exterior woven Russell Outdoors™ tab at hem

**



front



back

COLOR INFORMATION



Realtree Edge