



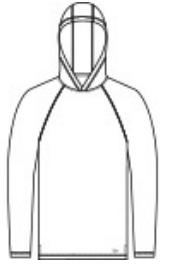
New Era® Power Long Sleeve Hoodie NEA229



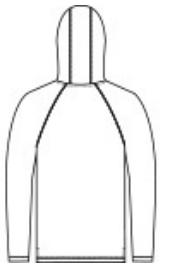
With moisture wicking and stretch, you'll feel the power of performance in this hoodie that's also brushed for comfort.

- 4.7-ounce, 91/9 polyester/spandex
- Debossed New Era neck taping
- Heat transfer label for tag-free comfort
- 3-panel hood
- Raglan sleeves
- Reflective silver heat transfer New Era flag logo on left hem

**



front



back

HOW TO MEASURE



CHEST WIDTH

Measure under the arm and around the fullest part of the chest with arms down, keeping tape horizontal.

SIZE CHART

	XS	S	M	L	XL	2XL	3XL	4XL
Chest	32-34	35-37	38-40	41-43	44-47	48-51	52-56	57-61

COLOR INFORMATION



Black
PMS BLACK C



Shadow Grey
Heather
PMS COOL GREY
10C



True Navy
PMS 533C