



OGIO® Ladies Hinge Full-Zip. LOG820



When your style hinges on looking sophisticated and modern, this subtly textured jacket hits the mark.

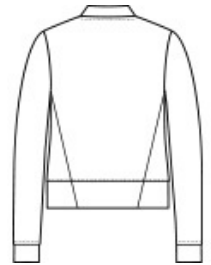
- 6-ounce, 100% poly
- Baseball-inspired collar
- OGIO heat transfer label for tag-free comfort
- Exposed polished molded zipper with locking zipper pull
- Sits at high hip
- Angled back seaming details
- Black reflective O heat transfer on front left hem

CARE INSTRUCTIONS

Machine cold with like colors. Do not use fabric softener. Do not bleach. Tumble dry low. Cool iron if necessary. Do not dry clean.



front



back

HOW TO MEASURE



CHEST WIDTH

Measure under the arm and around the fullest part of the chest with arms down, keeping tape horizontal.

SIZE CHART

| | XS | S | M | L | XL | 2XL | 3XL | 4XL |
|-------|-------|-------|-------|-------|-------|-------|-------|-------|
| Chest | 32-34 | 35-37 | 38-40 | 41-43 | 44-46 | 47-49 | 50-53 | 54-57 |

COLOR INFORMATION



Blacktop
PMS BLACK C



River Blue Navy
PMS 533C



Tarmac Grey
PMS 7540C