

**Port Authority® Ladies Network Fleece Jacket L422**



With a classic pique look, this brushed-back fleece has professional style thanks to its sophisticated metal zippers.

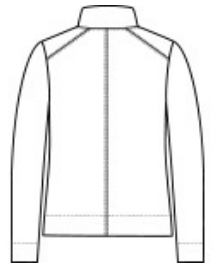
- 9.7-ounce, 58/42 cotton/polyester fleece with pique face and brushed back
- Metal center front zipper
- Invisible zippered hand pockets
- Deeper cuffs and hem

**CARE INSTRUCTIONS**

Machine Wash Cold With Like Colors. Only Non-Chlorine Bleach When Needed. Tumble Dry Low. Cool Iron If Necessary.



front



back

**HOW TO MEASURE**



**BUST**

Measure under the arm and around the fullest part of the bust with arms down, keeping tape horizontal.

**SIZE CHART**

	XS	S	M	L	XL	XXL	3XL	4XL
Size	2	4/6	8/10	12/14	16/18	20/22	24/26	28/30
Bust	32-34	35-36	37-38	39-41	42-44	45-47	48-51	52-55

**COLOR INFORMATION**



Charcoal  
PMS 432C



Deep Black  
PMS BLACK C



Grey Heather  
PMS 424C