

PORT AUTHORITY.

Port Authority® Ladies Essential Rain Jacket L407



A year-round must-have, this fully seam-sealed 8K/5K waterproof, breathable 2.5-layer jacket has a DWR finish. It packs easily and gives great weather-fighting performance.

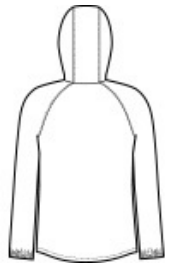
- 100% polyester shell bonded to a waterproof laminate film with DWR finish
- 8,000MM fabric waterproof rating
- 5,000G/M2 fabric breathability rating
- Interior grid print
- Waterproof center front zipper
- Interior storm flap with chin guard
- Front zippered pockets
- Elastic cuffs

CARE INSTRUCTIONS

Machine wash cold with like colors. Only non-chlorine bleach when needed. Tumble dry low. Cool iron if necessary. Do not Dry Clean.



front



back

HOW TO MEASURE



BUST

Measure under the arm and around the fullest part of the bust with arms down, keeping tape horizontal.

SIZE CHART

	XS	S	M	L	XL	XXL	3XL	4XL
Size	2	4/6	8/10	12/14	16/18	20/22	24/26	28/30
Bust	32-34	35-36	37-38	39-41	42-44	45-47	48-51	52-55

COLOR INFORMATION



Deep Black
PMS NTR BLACK
C



Graphite



Light Cyan Blue
PMS 638C



True Navy
PMS 533C



True Royal
PMS 7687C