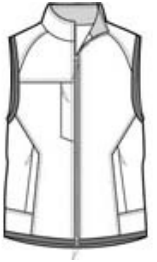


**DISCONTINUED Port Authority® Challenger™ Vest. J355**

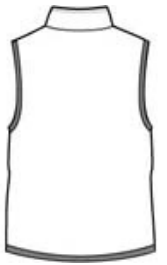


The versatile Challenger™ Vest has spandex-trimmed armholes and hem for long-wearing durability.

- Teklon® nylon shell
- 8.3-ounce, 100% polyester fleece body lining
- Double-needle stitching throughout
- Slash zippered pockets
- Port Pocket™ for easy embroidery access
- Binding at armholes and hem
- Due to a Tyvek inner lining, a silk screen or heat transfer treatment is not recommended for Goldenrod/True Black.

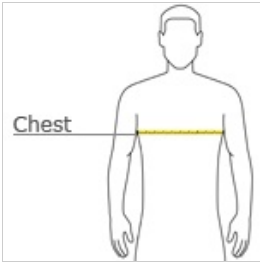


front



back

**HOW TO MEASURE**



**CHEST WIDTH**

Measure under the arm and around the fullest part of the chest with arms down, keeping tape horizontal.

**SIZE CHART**

	XS	S	M	L	XL	2XL	3XL	4XL
Chest	32-34	35-37	38-40	41-43	44-46	47-49	50-53	54-57

**COLOR INFORMATION**