

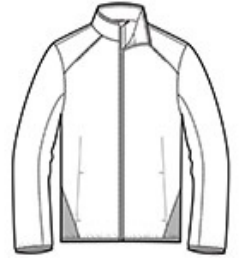
Port Authority® Zephyr Reflective Hit Full-Zip Jacket. J345

With eye-catching reflective hits and colorblocking details, this unlined jacket has a smooth hand along with wind- and water-resistance.

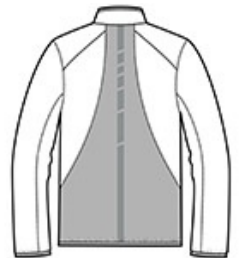
- 100% polyester shell
- Zip-through cadet collar
- Set-in sleeves
- Open front pockets
- Elastic binding at cuffs and hem

CARE INSTRUCTIONS

Machine wash cold with like colors. Do not bleach or use fabric softener. Tumble dry low. Remove promptly. Do not iron. Do not dry clean.



front



back

HOW TO MEASURE



CHEST WIDTH

Measure under the arm and around the fullest part of the chest with arms down, keeping tape horizontal.

SIZE CHART

	XS	S	M	L	XL	2XL	3XL	4XL
Chest	32-34	35-37	38-40	41-43	44-46	47-49	50-53	54-57

COLOR INFORMATION



Black
PMS NTR BLACK
C



Grey Steel/ Deep
Black
PMS 7540 C



Safety Yellow/
Deep Black