

DISCONTINUED Port Authority® Zephyr V-Neck Pullover. J342



This Zephyr style merges wind- and water-resisting performance with a silky smooth hand. This unlined piece is easy to wear over base or thermal layers. Modern sleek details offer instant appeal at a very appealing price.

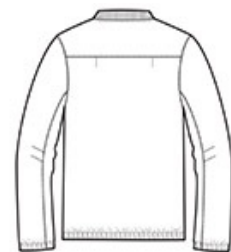
- 100% polyester shell
- Rib knit v-neck collar
- Back pleats
- Set-in sleeves
- Elastic cuffs and hem

CARE INSTRUCTIONS

Machine wash cold with like colors. Do not bleach or use fabric softener. Tumble dry low. Remove promptly. Do not iron. Do not dry clean.

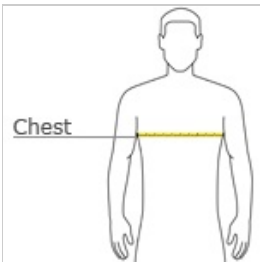


front



back

HOW TO MEASURE



CHEST WIDTH
Measure under the arm and around the fullest part of the chest with arms down, keeping tape horizontal.

SIZE CHART

	XS	S	M	L	XL	2XL	3XL	4XL
Chest	32-34	35-37	38-40	41-43	44-46	47-49	50-53	54-57

COLOR INFORMATION