

Eddie Bauer

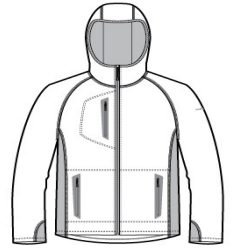
Eddie Bauer® Sport Hooded Full-Zip Fleece Jacket. EB244



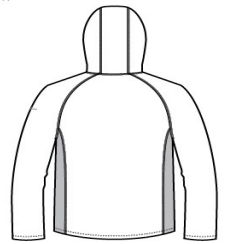
This sporty midweight jacket pairs smooth-faced fleece with stretch side panels for comfort during active adventures. Three-panel hood with contrast lining. Reverse coil zippers, welded zippered contrast pockets. Contrast Eddie Bauer heat transfer logo on left sleeve. Made of 7.7-ounce, 100% polyester diamond doobby fleece with an anti-pill finish inside. 88/12 poly/spandex side panels.

CARE INSTRUCTIONS

Machine wash cold with like colors, only non-chlorine bleach when needed, tumble dry low, warm iron if necessary.



front



back

HOW TO MEASURE



CHEST WIDTH

Measure under the arm and around the fullest part of the chest with arms down, keeping tape horizontal.

SIZE CHART

	XS	S	M	L	XL	2XL	3XL	4XL
Chest	32-34	35-37	38-40	41-43	44-46	48-50	52-54	55-57

COLOR INFORMATION



Black
PMS NTR BLACK
C



Grey Cloud/ Grey
Steel/ Expedition
Blue
PMS 2144C



Metal Grey/ Grey
Steel/ Citron
PMS 396C